



General

Weaving in Color is set for 7 weeks as a 2 part Weave-A-Long. Part 1 is changing colors in the 4 different layers of the 3 layer warping method and Part 2 will be changing colors within the layers.

Goals:

- To not be afraid to use multiple yarns in the same square.
- To be able to visualize a pattern in your color choices
-

Materials

- Yarn – 4 different colors of yarn that will weave a nicely filled in square. Not lacy as patterns do not show up as well. Colors can be your choice, but they should be distinct. Demonstration yarns are from my stash of handspun.
- Loom – 2 or 4 inch square (or any loom that can be used for the 2 or 3 layer warping method)
- Weaving needle (a second needle can be handy for some patterns but not necessary)
- Packing tool – many use a fork
- Scissors
- Any other tools that you like when weaving on pin looms

Weaving Pattern

Weaving pattern can be plain weave or pick a pattern of your choice. Some patterns will pop in some of the finished squares but not in others. Demonstration pictures are done with a 2 inch plain weave and a 4 inch Loomette Weave B 30 from *The Loomette Handbook* which can be downloaded from http://www.eloomanation.com/weaving/patterned_weaves.php There are many other patterns that could be chosen from the same site or <http://adventuresinpinloomweaving.com/> <http://windsweptmind.com/>

Week 1



For the first 3 weeks designate your yarns as Yarn A, Yarn B, Yarn C and Yarn D

When changing color between layers I leave a short tail and tie a square knot to the next color. When weaving is completed I then weave in the short tails before removing the square from the loom. This leaves the initial and final tails for joining, or they can be woven in as you go. Or tails can be left loose for joining later as done with the 2 inch square demo. For more information on working in yarn tails and changing colors these might be helpful

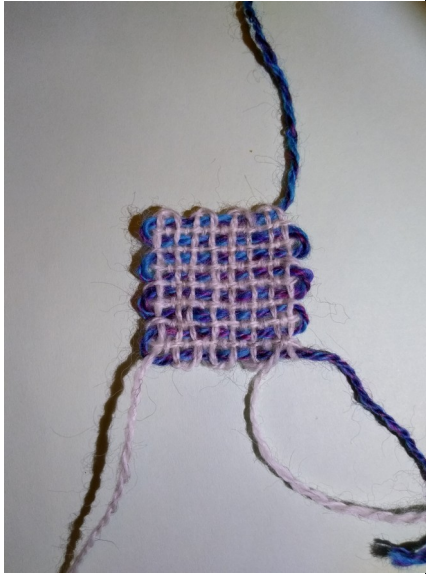
<http://adventuresinpinloomweaving.com/2017/12/14/beginners-corner-pin-loom-basics-lesson-2/>

and

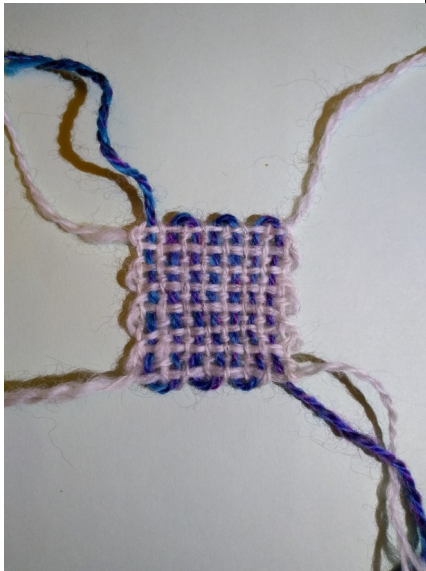
<http://windsweptmind.com/2017/04/19/adventures-in-pin-loom-weaving-book-weave-along-using-2-colors/>

	2 inch pin loom Plain Weave	4 inch pin loom Loomette Weave B30
Square 1.1 Weave a square using Yarn A for all layers		

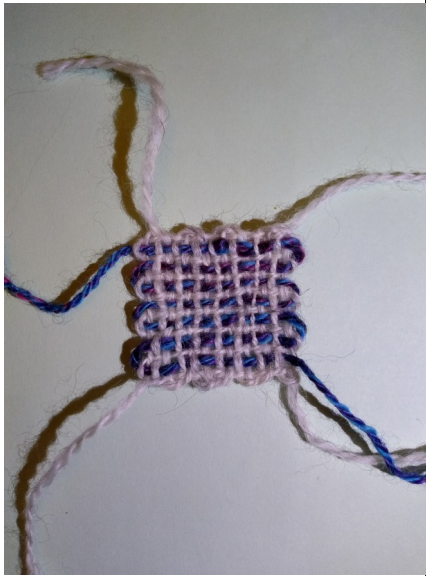
Square 1.2 Weave a square using Yarn A for layers 1, 2 & 3, and Yarn B for layer 4



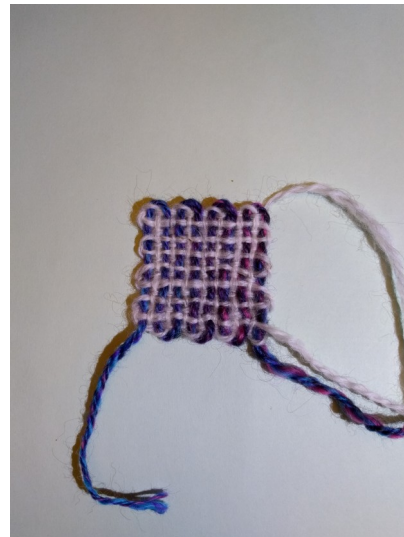
Square 1.3 Weave a square using Yarn A for layers 1, 2 & 4 and Yarn B for layer 3



Square 1.4 Weave a square using Yarn A for layers 1, 3 & 4 and Yarn B for layer 2



Square 1.5 Weave a square using Yarn B for layer 1 and Yarn A for layers 2, 3 & 4



If you need help or have comments on how to make these instructions better please contact me via facebook or email carol@akylafarms.com